
CROSSROADS

Family & Children's Center
2011 Community Report





Meet Jada. She knows the difference a right turn can make.



A Letter to Our Friends

Life is full of crossroads. For better or worse, our lives and our communities largely reflect the cumulative choices we make. Each time we choose presence over absence, better over status quo, engaging over ignoring, we are saying something about what we individually and collectively value for ourselves, for others, for our future together.

At Family & Children's Center, we work every day with people who are at their own crossroads: people who are choosing between darkness and light, emotional pain and mental health, torturous pasts and better tomorrows. We are grateful to have been able to help more than 3,000 children and families this year identify better ways to live and choose new paths for the future.

We are also grateful to you. Our work would not be possible without the generosity of our donors, volunteers and dedicated staff. You make these crossroads possible. You make these better paths available. You are the reason for more better tomorrows than can be counted. For all that you do, for all the children and families you help, thank you.

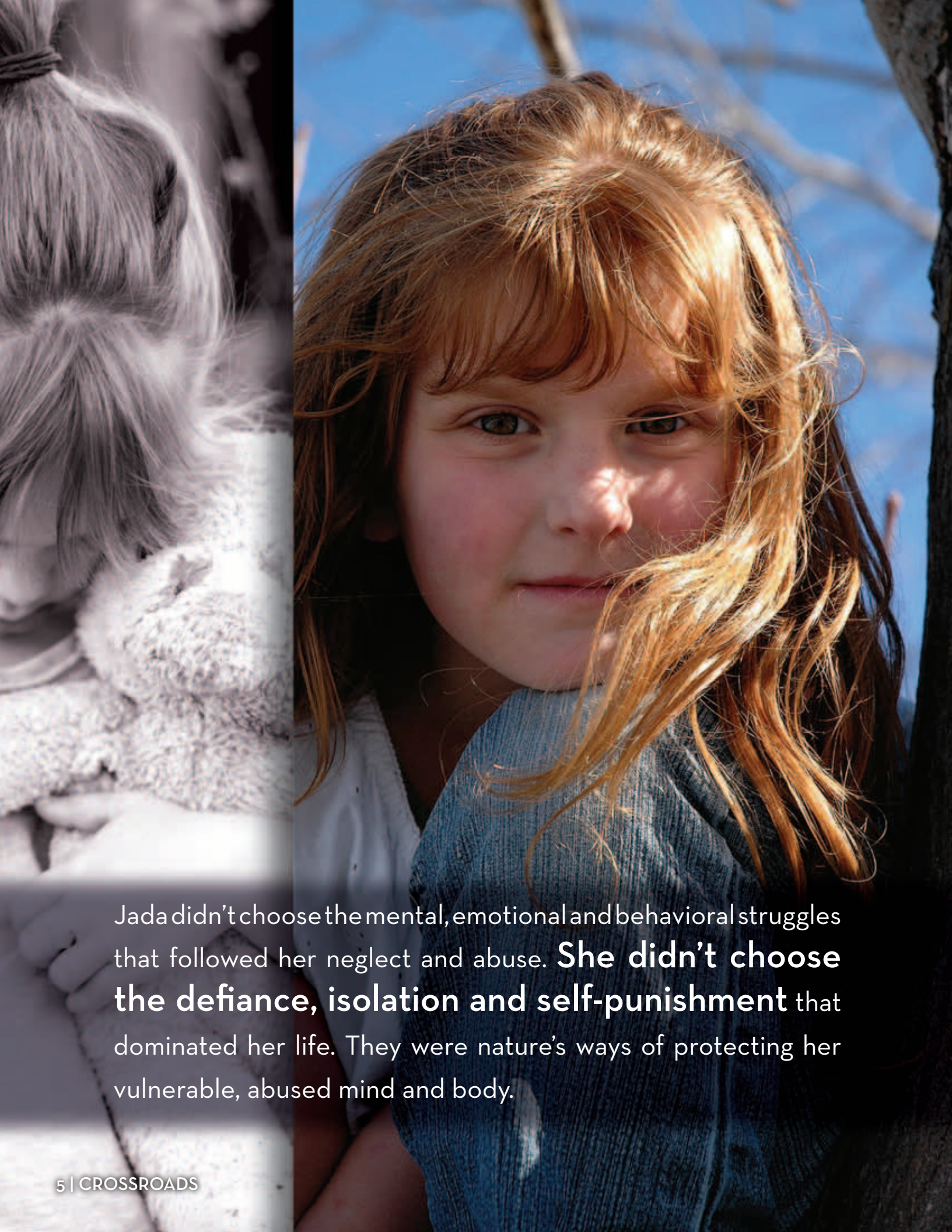
Mike Boehm
President and CEO

Jim Warren
2012 Chair, Board of Directors

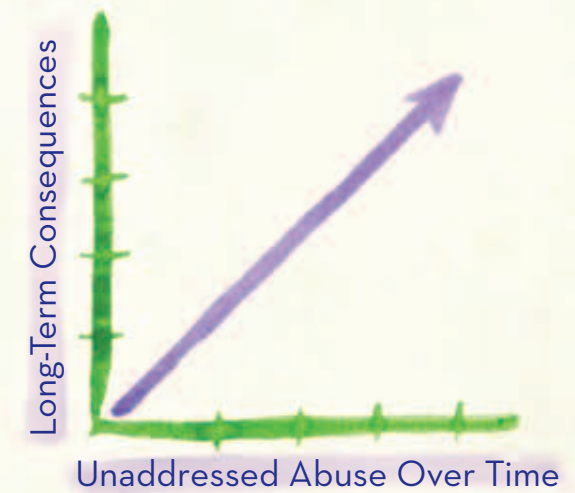
Like the rest of us, **Jada didn't get to choose her parents or the circumstances in which she grew up.** She didn't choose to be born to a young, drug-addicted mother, to be abandoned as a toddler. She didn't choose then to live with a grandmother who neglected her and the live-in boyfriend who sexually abused her.



One in five children will be abused before the age of 18.



Jada didn't choose the mental, emotional and behavioral struggles that followed her neglect and abuse. **She didn't choose the defiance, isolation and self-punishment** that dominated her life. They were nature's ways of protecting her vulnerable, abused mind and body.



Childhood trauma results in serious health, social and economic risks that harm the victim as well as communities.



The day social workers placed 13-year-old Jada in Family & Children's Center's residential treatment, **Jada realized she was at a crossroads.** She had choices. She could stop acting out, strangling herself and abusing drugs and alcohol. She could, instead, choose better tomorrows.

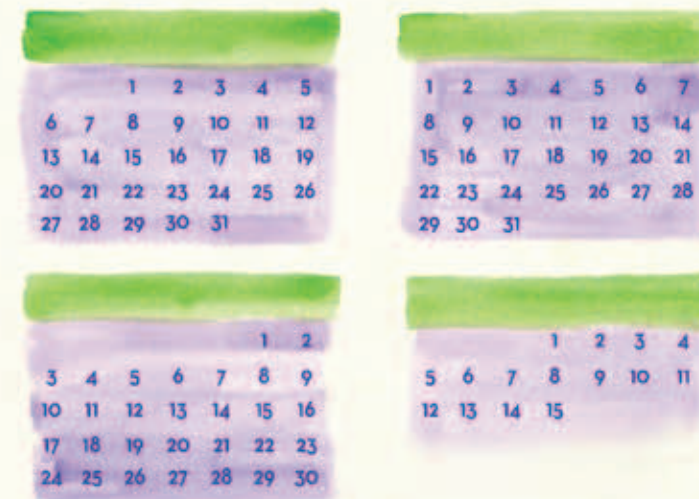


86%
success

Four out of five children in residential treatment were discharged to a less restrictive setting.



Jada chose better tomorrows, and with the help of her Family & Children’s Center therapist, Jada focused on healing. She worked hard in the center’s alternative education program, and, perhaps most importantly, she began to see herself for the compassionate, loving girl she’s always been.



Students who succeed in alternative education typically return to traditional schools in fewer than four months.



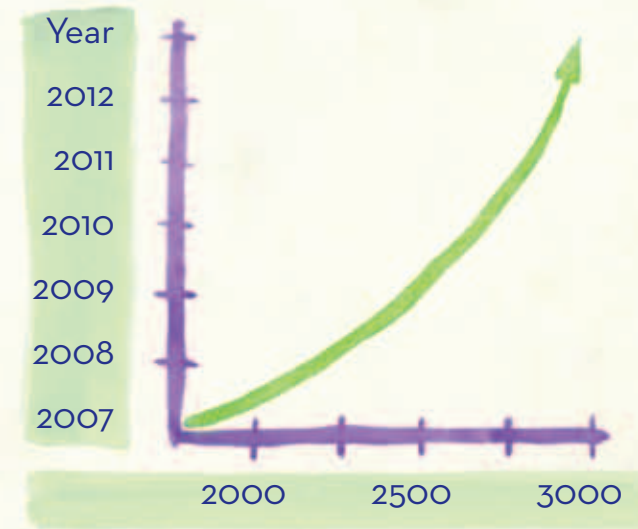
Empowered, Jada began making goals. Finding a new, permanent family was first priority, and Jada was placed with Family & Children's Center's Treatment Foster Care (TFC) parents. Jada fit in and began contributing immediately. **She continued to blossom.**



Three out of four children served in Treatment Foster Care found permanent homes.



After more than 30 years of caring for over 100 TFC children, Jada's foster parents are for the first-time ever adopting one of their TFC kids. Now a straight-A student eyeing a career where she can help other children, Jada is at another crossroads, and **she's choosing to be part of a permanent family.** It's the same sort of family every child deserves – one who loves, appreciates and protects her and one where she will always belong.



Family & Children's Center serves thousands of children and families every year.

Mission

Family & Children's Center serves children, families and individuals with a continuum of services designed to strengthen families and promote individual well-being.

2011 Highlights

- Winona programs move to new Minnesota headquarters facility, marking Family & Children's Center's continued expansion to meet the growing needs of the Winona community.
- Family & Children's Center opens Matty's Place, Winona's long-awaited children's advocacy center, and partners with the National Child Protection Training Center to bring the nation's best practices to help children when abuse is reported.
- Family & Children's Center collaborates with The Parenting Place in La Crosse to expand child abuse/neglect prevention services and develop a Family Interaction Program to strengthen vulnerable families.
- The True Blue campaign continues to garner broad-based support, adding 20 corporate partners to aid in stopping all child abuse and neglect in our communities. Additionally, Dahl Automotive, a True Blue sponsor, selects Family & Children's Center as a beneficiary of its 100th anniversary charity-of-the-month program.
- Community support programs add peer specialists and, through a grant from Dartmouth University, supported employment services—continuing our commitment to providing evidence-based programming.
- Leadership of Family & Children's Center begins transitioning to Mike Boehm after Family & Children's Center announces John Burgess, president and CEO for the past 20 years, will become president emeritus.

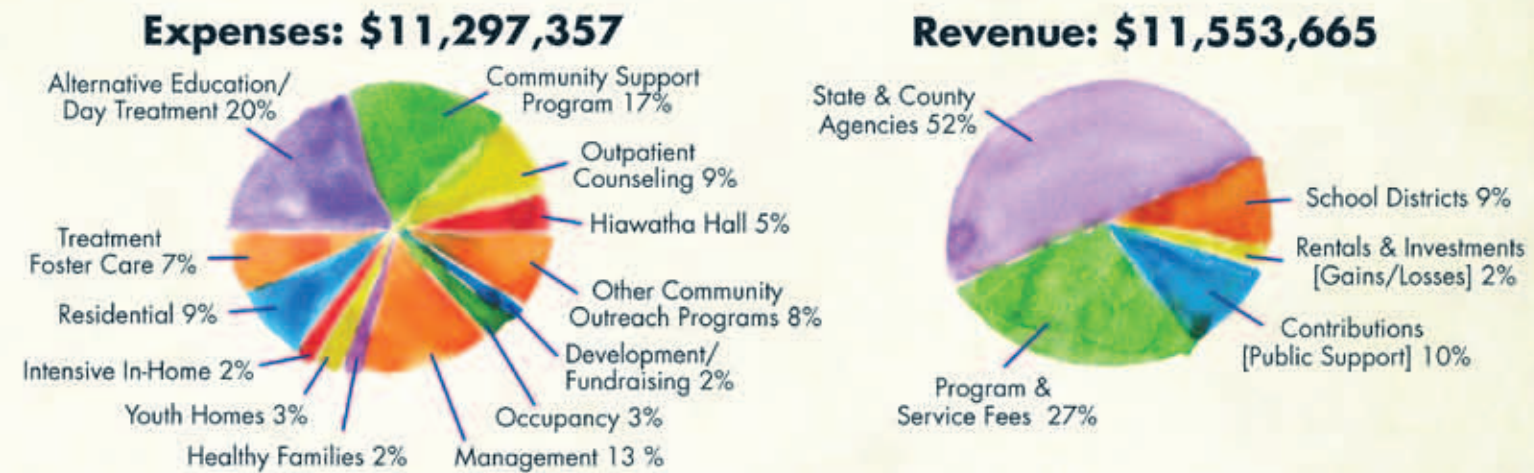
2011 Healthy Families Outcomes

- 87 families, including 102 target children received services
- 1,745 home visits were conducted
- 77% of self-sufficiency goals, as identified on individualized family support plans, were achieved (375/487 goals)
- 100% of children had a primary health care provider identified and were up to date on immunizations
- 100% of children had their development monitored; only 2 needed to be referred to Birth to 3 for more intense services
- 100% of families had home environment monitored; only 4% showed a need for parent-child enrichment
- 0 substantiated reports of child abuse for participating families

Programs

- Alternative Education
- Assessment Services
- Community Respite Program
- Community Support Programs
- Coordinated Services Team
- Day Treatment (Preschool – High School)
- Domestic Abuse Project
- Fox Hollow Senior Apartments
- Healthy Families Child Abuse/Neglect Prevention
- Hiawatha Hall Residential Facility for Adults with Mental Illness
- Intensive In-Home Counseling
- Intensive Tracking Program
- Matty's Place Children's Advocacy Center
- Outpatient Counseling
- Residential Treatment
- Residential Youth Home
- Sandcastles
- Stepping Stones Children's Advocacy Center
- Treatment Foster Care
- Youth Night Campus
- Youth Psychological/Psychosexual Evaluations

2011 Financial Highlights



Read Jada's full story by finding Family & Children's Center on Facebook at facebook.com/FamilyChildrensCenter.

2011 Board of Directors



John Burgess*
President/CEO



Jim Warren
Chair



Tyler Dahl
Vice Chair



Gary Evans
Secretary/Treasurer



Jerry Arndt
Elected in 2011



Sabina Bosshard



Elizabeth Burke



Scott Chorski



Eva Dahl



Dave Dregne



Laura Eddy
Elected in 2011



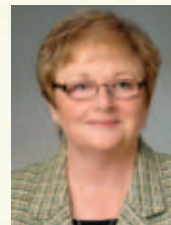
Tom Fitzpatrick
Elected in 2011



Perian Heffner



Linda Lyche



Linda Mershon, FSPA
Elected in 2011



Stacey Mounce, DDS



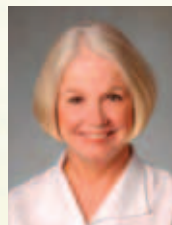
Joan Mueller



Rich Petro
Past Chair



Tom Reinert



Suzanne Tanke



Barb Slaggie
Elected in 2011



Don Weber

*John Burgess, Family & Children's Center's president and CEO from 1992-2011, arrived at his own crossroads this year. After 20 years of leading the center and being honored as president emeritus, John accepted a new position at Arizona State University, where he now serves in the Center for Applied Behavioral Health Policy. John's legacy at Family & Children's Center is tremendous, and the communities we serve are forever changed for his vision and leadership. We wish him well on his new path and remain forever indebted for the innumerable better tomorrows he brought to our region.

Our Own Crossroads

Just as Jada did, our community now faces a crossroads. In many ways, it's up to us whether we allow children like Jada to get such a rough start in life and then again whether we intervene to offer them a better way.

We can choose to allow children to be abused, thereby choosing the incumbent consequences: children who are delinquent, promiscuous and use drugs and who grow into adults who can't keep a job, who rely on public assistance, abuse substances and commit crimes.

Or we can choose to stop abuse and neglect. We can choose to prevent abuse through Healthy Families, Stepping Stones and Matty's Place. And where things have gotten off course, we can intervene with day treatment, alternative education, Treatment Foster Care and other residential options, outpatient therapy and community support.

The choice is ours. Will you please join us and others in the community to give children and families a choice? To provide a better path to tomorrow?

Your tax-deductible donation will help assure that all children get what they want and need most: families who love them, appreciate them, protect them and serve as positive role models.

If you've supported us in the past, thank you. If you haven't, please, will you?

To learn more about giving to Family & Children's Center, including how to give memorials, stocks, real property and estate gifts, contact our development office at (608) 785-0001 ext. 257 or sbattison@fccnetwork.org.

Give Any Time!

Scan this code with your phone or tablet to go directly to our donations page - or visit fcconline.org/donations



CROSSROADS



Family & Children's Center

Better Tomorrows Start With Us

Wisconsin

Wisconsin Headquarters:

1707 Main Street
La Crosse, WI 54601
Telephone: (608) 785-0001

Black River Falls:

P.O. Box 271
409 County Road R
Black River Falls, WI 54615
Telephone: (715) 284-9477

Holmen:

1000 Linden Drive
Holmen, WI 54636
Telephone: (608) 526-4000

Viroqua:

1321 N. Main Street
P.O. Box 149
Viroqua, WI 54665
Telephone: (608) 637-7052

La Crosse:

2507 Weston Street
La Crosse, WI 54601
Telephone: (608) 787-9403

Minnesota

Minnesota Headquarters:

601 Franklin Street
Winona, MN 55987
Telephone: (507) 453-9563

Winona:

428 West Broadway
Winona, MN 55987
Telephone: (507) 454-7711

Rochester:

2118 Campus Drive SE
Rochester, MN 55904
Telephone: (507) 281-3508



www.fcconline.org



Like Us on Facebook to read Jada's full story.